

Folkeboot Gold Cup 2022



KIELER YACHT-CLUB

gegründet 1887



Kiel

ACTIVITIES FOR FAMILIES

- Go to one of the two botanical gardens in Kiel
- Eating Kiel sprats
- Taking a walk to the Bülk lighthouse and eating ice cream
- Taking a hop-on hop-off tour on the red double-decker bus
- Going to the Kiel Maritime Museum or to the Kiel Aquarium
- Take a vacation at Schilksee beach

2

- To the zoo "Arche Warder" or "Tierpark Gettorf"
- Visit a swimming pool (Schilksee or Hörnbad)
- Visit a high ropes course (Falkenstein or Altenhof)
- go to Eckernförde and create BonBons
- Kiel is the capital of Schleswig-Holstein with 247.121 inhabitants.
- 27 sailing clubs, with 9 modern marinas for 3.000 boats and 20.000 active sailors and surfers.
- 1936 and 1972 Olympic Games.
- Olympic base of German Sailing Federation (DSV)



Kiel.
Kiel
Sailing.City.



Climate



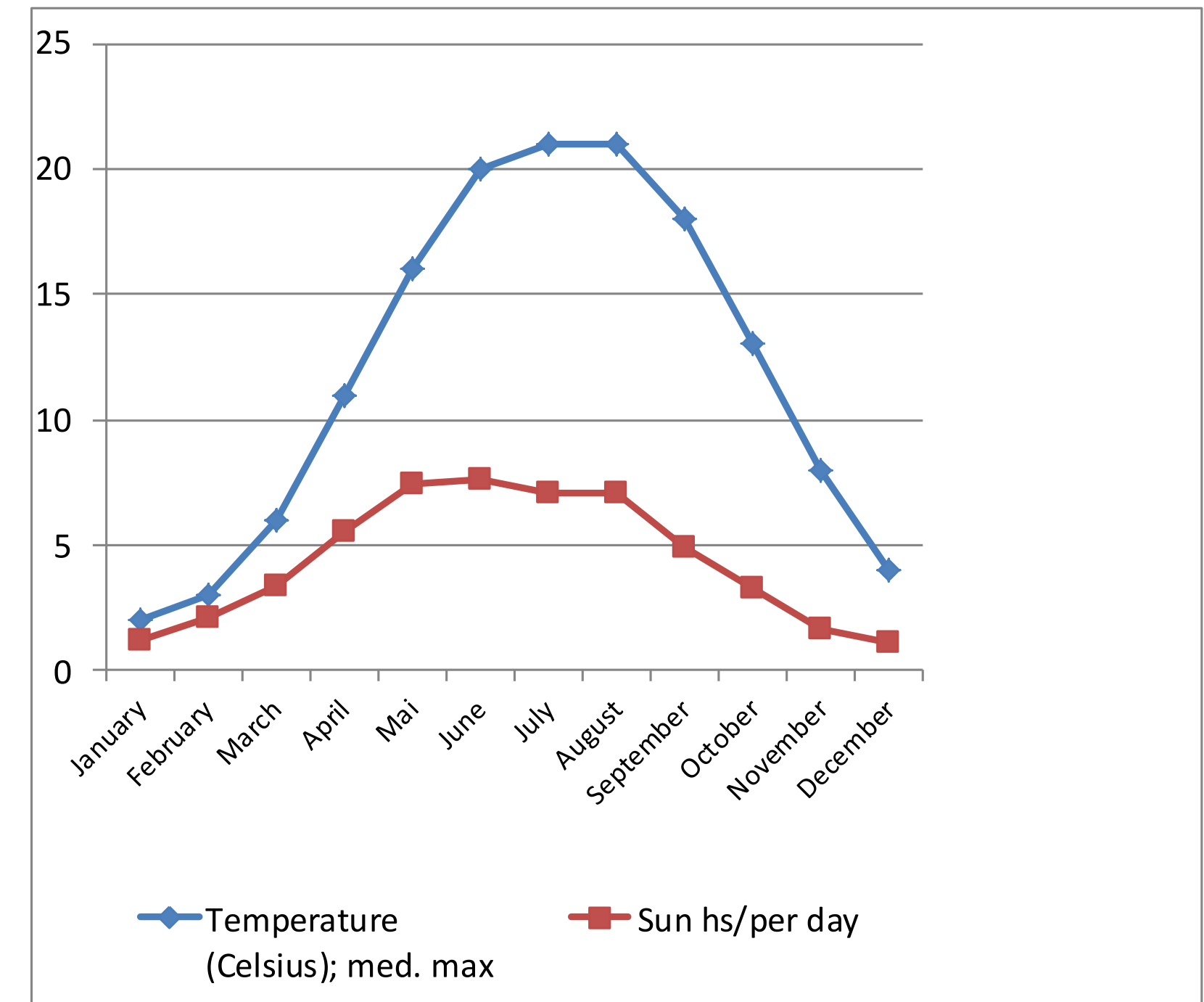
CLIMATE (JULY, LONG TIME AVERAGE)

Wind speed

0 – 5 knots	12.1%
5 – 10 knots	28.3%
10 – 15 knots	24.2%
15 – 20 knots	21.3%
20 – 30 knots	13.1%
30+ knots	0.8%

Wind direction

0° – 60°	11.9%
60° – 120°	19.9%
120° – 180°	7.3%
180° – 240°	22.5%
240° – 300°	27.2%
300° – 360°	11.1%



Location

KIEL. SAILING. CITY.

4

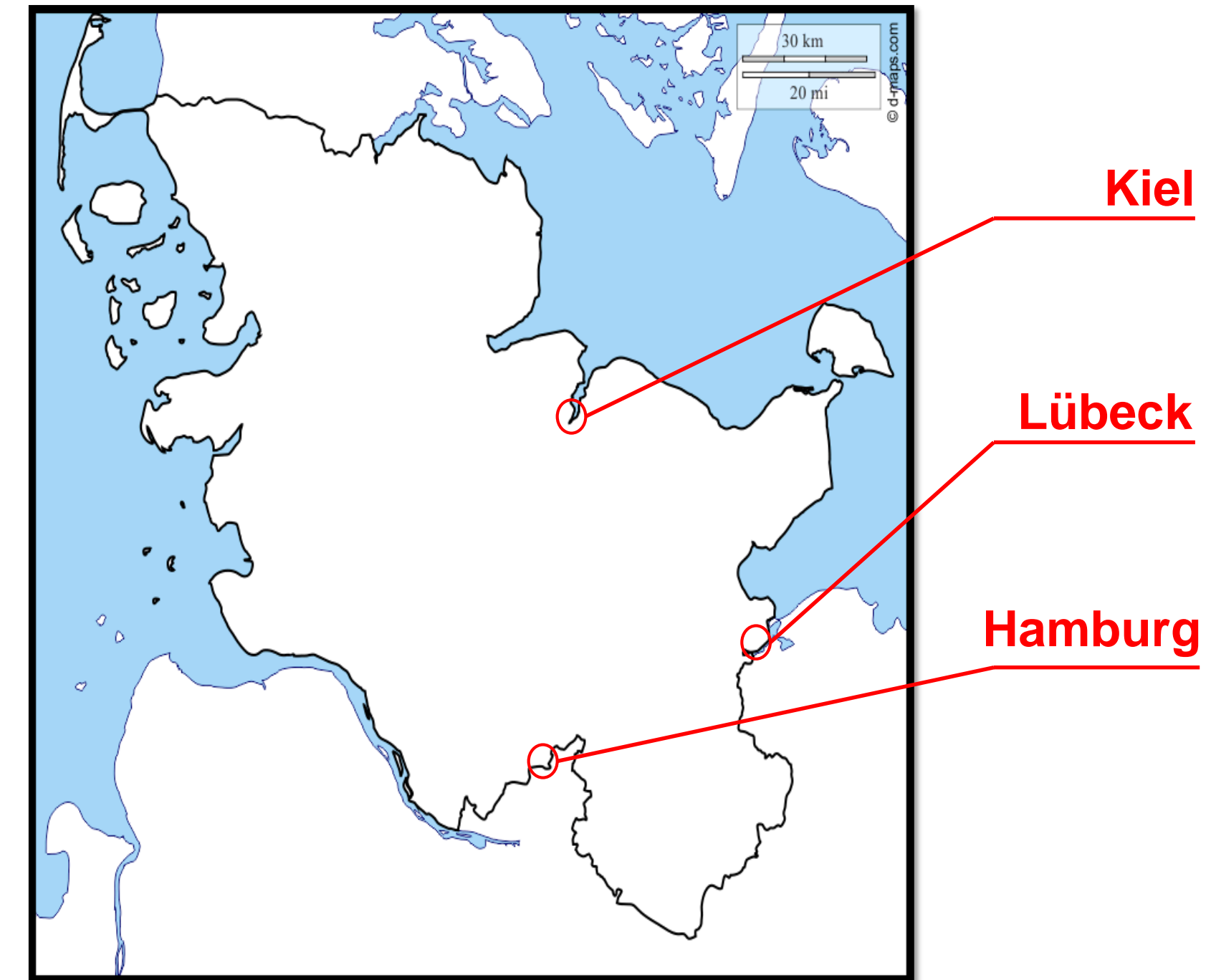
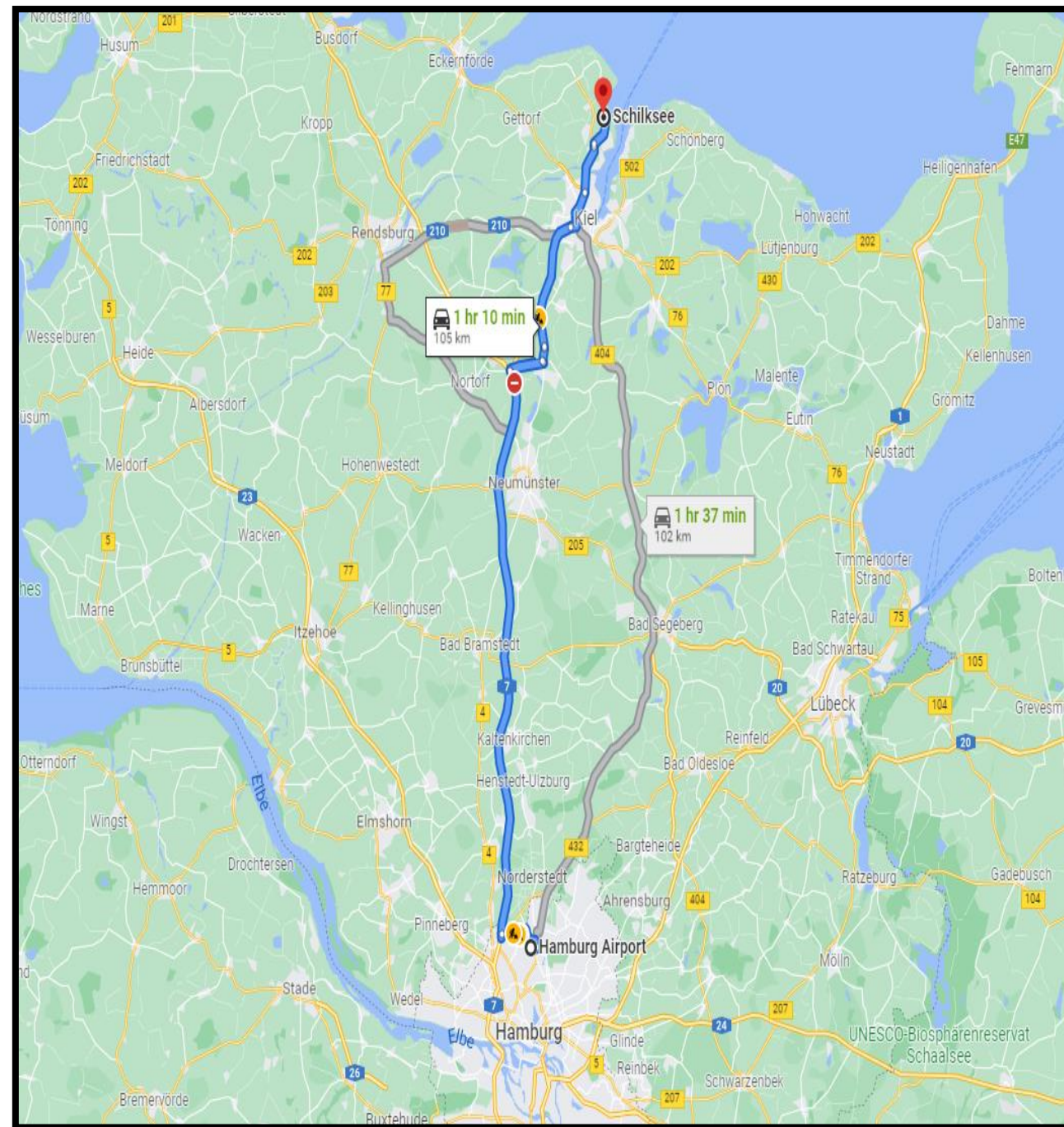
ACCOMMODATION

- Capacity overall: 1,905 rooms;
 - 4 stars: 666 rooms;
 - 3 stars: 695 rooms;
- Campsite directly next to racing area!
- if you use booking.com or airBnB or a similar search platform, please look for Kiel-Schilksee, Strande, Holtenau, Kiel-Nord or Altenholz (close to the event venue)

We would not recommend booking an accommodation in Laboe. It is only 10 km from Schilksee, but it takes 45 minutes by car/bus.

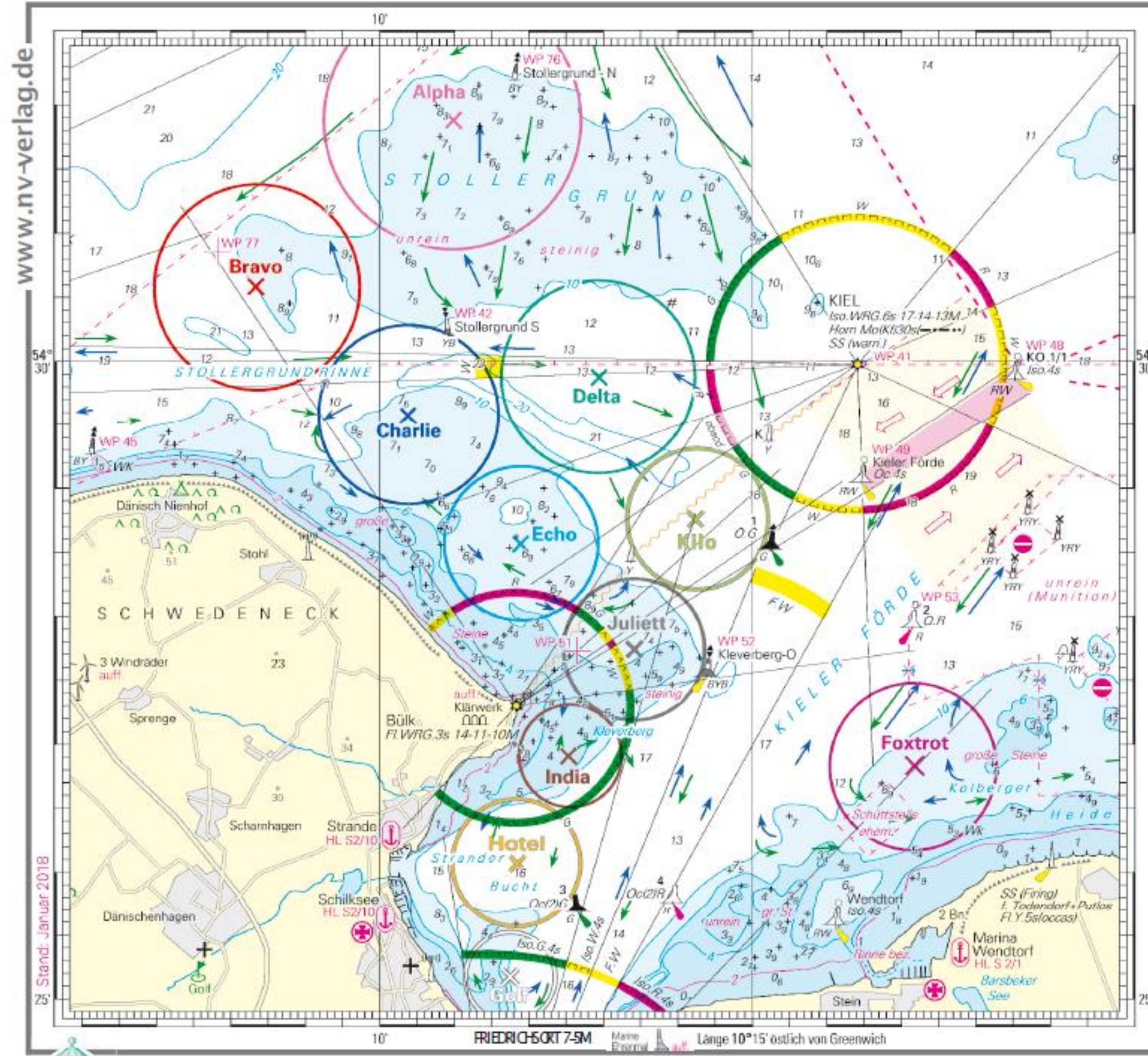
INFRASTRUCTURE

- Airports: Kiel, Hamburg, Lübeck and Denmark (Billund and Sonderburg).
 - Distance to Hamburg: 100 km.
- Very high quality level of public transport (both train and bus).



Location

KIEL. SAILING. CITY.



NV. Regattakarte



KIELER YACHT-CLUB
gegründet 1887

Event Venue – Onshore Overview

OLYMPIC SAILING CENTRE KIEL-SCHILKSEE



Event Venue

ONSHORE

- Infrastructure of the Olympic Sailing Center Kiel-Schilksee will be used, which provides sufficient parking spaces, halls for measurement, berthing with guarded access, facilities and celebrating locations; very good traffic connection to downtown Kiel.
- The *Regattahaus* in Kiel-Schilksee will be used for race office, jury meetings and media center for press conferences (existing technical equipment, high speed Internet, WiFi, e.g.).
- Accommodation and transport infrastructure: Near-by, sufficient rooms and space are available for all visitors and sailors; Kiel is very approachable via all means of transports.

